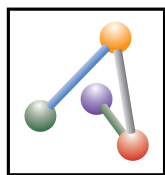


Experts in Structural Adhesives, Instant Adhesives & Encapsulants- Potting Compounds



Resinlab[®]

AN ELLSWORTH ADHESIVES COMPANY 

www.resinlab.com

ENCAPSULANTS - POTTING

Product	Color	Pot Life	Key Features	Mix Ratio by Volume	Viscosity cps
---------	-------	----------	--------------	---------------------	---------------

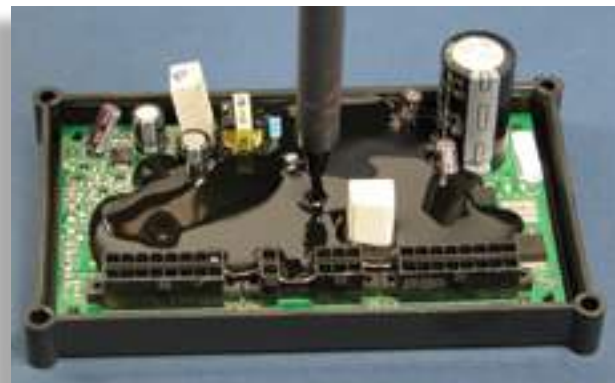
Epoxy Potting Compounds

EP691	Clear	> 2 Hours	Optically clear, long pot life, large mass potting, unfilled	2:1	9,000
EP965	Black or Clear	15-20 Minutes	General purpose, medium viscosity, fast gel, economical, small mass potting, high gloss, unfilled	1:1	11,000
EP965SC7	Black or Clear	45-60 Minutes	Medium viscosity, long pot life, low exotherm, large mass potting, high gloss, unfilled	1:1	8,000
EP965LVLX	Black or Clear	8-12 Minutes	Low viscosity, low exotherm, fast gel/cure time, excellent air release, unfilled	1:1	2,500
EP1046FG	Black or Clear	2-4 Minutes	Small potting, low exotherm, very fast gel/cure time, excellent air release and wetting, unfilled	1:1	1,300
EP1056LV	Black	30-40 Minutes	Excellent adhesion to PVC wire & plastic shells, medium viscosity & pot life, unfilled	2:1	10,000
EP1121	Black or Clear	60-90 Minutes	Low viscosity, low durometer, long pot life, low stress potting, good for mismatched CTE's, unfilled	1:1	2,900
EP1200	Black	> 2 Hours	High thermal conductivity, flexible, long pot life, large mass potting, filled	1:1	30,000
EP1218	Black or Clear	> 4 Hours	Low viscosity, very low durometer, very long pot life, low stress potting, low CTE and shrinkage, large mass potting	1:1	500
EP1282*	Black or Clear	90-120 Minutes	UL94HB & CTI rated, low viscosity, durometer and stress, excellent thermal shock & cycling resistance, best for surface mount components, unfilled	1:1	3,000
EP1285	Black	Varies	Very High thermal conductivity, Low CTE, high Tg, and chemical resistance, various hardeners available for varied physical properties, filled	Varies	Varies
EP1295*	Blue or Black	60-90 Minutes	Halogen free, flame retardant, UL 94 V-O, medium work life, semi-flexible, large mass with low stress potting, filled	1:1	10,000
EP1305LV	Black	15 Minutes	Excellent adhesion to plastic components and shells, fast cure, toughened, thermal cycling resistant, unfilled	1:1	30,000
EP1340*	Black	20-25 Minutes	UL94VO rated, medium viscosity, medium cure speed, semi-flexible for smaller mass potting, filled	1:1	12,000
EP1390*	Black	45 Minutes	UL94VO rated, medium viscosity and cure speed, higher hardness, medium mass potting, filled	4:1	7,000

Urethane Potting Compounds

UR3001HP	Clear	15-20 Minutes	Very soft re-enterable gel, low viscosity, fast cure, excellent water resistance and low temperature properties	1:1	2,000
UR3010	Black or Clear	30-45 Minutes	Tough, elastomeric polymer, low viscosity, medium cure, excellent adhesion to plastic, and excellent hydrolytic stability and water resistance	1:1	600
UR1049	Cream	20 Seconds	Very fast, water blown, 4 lb. per/cu. ft. density, rigid foam, low dielectric constant, high modulus, low weight, low exotherm	1:1	600

* UL File No. E186034



Many more formulas are available.
Call 1-877-259-1669 or go online at www.resinlab.com

STRUCTURAL ADHESIVES

Product	Color	Pot Life	Key Features	Mix Ratio by Volume	Viscosity cps
---------	-------	----------	--------------	---------------------	---------------

Acrylic Adhesives

AR4305HP	Natural	5-6 Minutes	General purpose structural adhesive, very fast RT cure, non-sag viscosity, tenacious bonds to unprepared metal, FRP, and plastics	1:1	280,000
AR4315HP	Natural	10-12 Minutes	General purpose, slower cure speed, non-sag viscosity, structural adhesive for metals, FRP, and plastics	1:1	280,000

Epoxy Adhesives

EP11HT	Gray	> 2 Hours	High strength metal bonder, non-sag viscosity, excellent impact strength and chemical resistance	1:1	700,000
EP11HTFS	Gray	30-40 Minutes	Faster setting EP11HT, high strength metal and plastics bonder, excellent impact strength and chemical resistance	1:1	750,000
EP750	Black or Clear	> 2 Hours	FDA approvable, general purpose for metals, ceramics, and some plastics, medium viscosity and long work life	1:1	12,500
EP1026	Black or Clear	3-5 Minutes	Very fast setting, standard "5 minute" epoxy, bonds metals, glass & ceramics, good clarity, water and chemical resistance	1:1	15,500
EP1026HP	Translucent	3-5 Minutes	Epoxy/Acrylic hybrid, high performance "5 minute", excellent impact and peel strengths with higher heat resistance	1:1	12,500
EP1026T3	Off White	3-5 Minutes	Very fast curing, non-sag, "five minute" epoxy, bonds metals, plastics, and ceramics	1:1	932,000
EP1056LC	Black	30 Minutes	Excellent PVC bonder, also bonds other plastics, metals, and ceramics, medium viscosity and cure speed, good heat & impact resistance	2:1	165,000
EP1115	Amber	8-12 Minutes	Modified, toughened, "5 minute" epoxy with better heat and impact resistant bonds to many substrates	1:1	30,000
EP1199	Black or Clear	8-12 Minutes	Fast cure, high clarity & gloss, medium fast cure time, very good moisture, chemical & heat resistance	1:1	9,000
EP1225	Black	10-20 Minutes	Very flexible, fast cure, high viscosity, excellent low temperature performance for metals & plastics	2:1	30,000
EP1238	Black or Off White	20 Minutes	Very high shear & peel strength, medium fast cure, acrylic/epoxy hybrid toughened for high peel and impact strength	2:1	65,000
EP1290	Gray	> 2 Hours	High shear & peel, flexible, high viscosity, long work life, extremely versatile adhesive	1:1	90,000
EP1305	Black	15 Minutes	Rubber toughened for high peel strength and impact resistant bonds to metal & plastics, higher viscosity, medium fast cure speed	1:1	400,000

One Part Heat Cure Epoxy Adhesives

EP950G	Gray	3 Months @ 25 C	One part heat cure, non-sag, very high shear and impact strengths on metals, excellent magnet bonder	One part heat cure	500,000
EP1325	Black	3 Months @ 25 C	One part fast, low temperature heat cure, RT stable small mass potting or component bonding to FR-4	One part heat cure	500,000
EP1330	Black	3 Months @ 5 C	One part fast, low temperature heat cure, RT stable, very high thermal conductivity, low shrinkage and CTE	One part heat cure	500,000



Many more formulas are available.
Call 1-877-259-1669 or go online at www.resinlab.com

INSTANT ADHESIVES

Product	Base	Color	Gap Fill	Viscosity	Shear Strength	Temp Range	Cure Speed
---------	------	-------	----------	-----------	----------------	------------	------------

Cynergy® General Purpose Cyanoacrylate Adhesives

CA6001	Ethyl	Clear	2 mil	5 cps	4300 psi	-54 to 93 C	>5 seconds/8 hours
CA6004	Ethyl	Clear	4 mil	45 cps	4300 psi	-54 to 93 C	>8 seconds/8 hours
CA6005	Ethyl	Clear	6 mil	100 cps	4300 psi	-54 to 93 C	>10 seconds/8 hours
CA6007	Ethyl	Clear	7 mil	500 cps	4300 psi	-54 to 93 C	>12 seconds/8 hours
CA6010	Ethyl	Clear	8 mil	1500 cps	4300 psi	-54 to 93 C	>15 seconds/8 hours
CA6014	Ethyl	Clear	8 mil	4000 cps	4300 psi	-54 to 93 C	>15 seconds/8 hours

Metal Bonding Cyanoacrylate Adhesives

CA6103	Methyl	Clear	8 mil	100 cps	4000 psi	-54 to 93 C	>10 seconds/8 hours
CA6104	Methyl	Clear	8 mil	1000 cps	4000 psi	-54 to 93 C	>10 seconds/8 hours

Surface Insensitive Cyanoacrylate Adhesives

CA6201	Ethyl	Clear	2 mil	5 cps	4200 psi	-54 to 93 C	>5 seconds/8 hours
CA6203	Ethyl	Clear	6 mil	120 cps	4200 psi	-54 to 93 C	>8 seconds/8 hours
CA6210	Ethyl	Clear	10 mil	Gel	2800 psi	-54 to 93 C	>19 seconds/8 hours

Toughened Cyanoacrylate Adhesives

CA6402	Ethyl	Clear	8 mil	800 cps	3750 psi	-54 to 121 C	>15 seconds/8 hours
CA6403	Ethyl	Clear	10 mil	2400 cps	3750 psi	-54 to 121 C	>15 seconds/8 hours

Black, Toughened Cyanoacrylate Adhesives

CA6501	Ethyl	Black	8 mil	300 cps	3750 psi	-54 to 121 C	>10 seconds/8 hours
CA6503	Ethyl	Black	10 mil	4000 cps	3750 psi	-54 to 121 C	>18 seconds/8 hours

Low Odor / No Bloom Cyanoacrylate Adhesives

CA6702	Modified	Clear	5 mil	100 cps	3000 psi	-54 to 93 C	>15 seconds/8 hours
CA6704	Modified	Clear	8 mil	1000 cps	2900 psi	-54 to 93 C	>20 seconds/8 hours



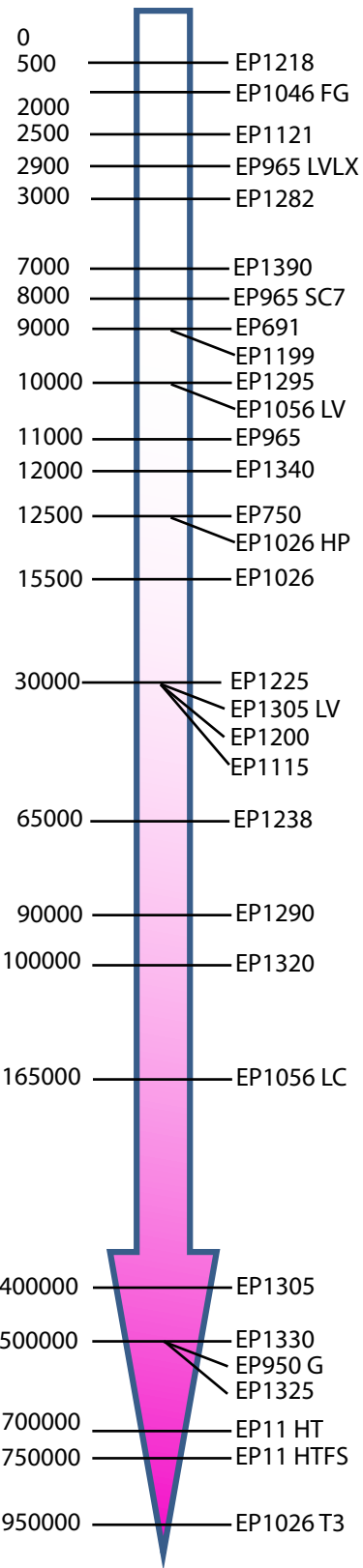
Many more formulas are available.
Call 1-877-259-1669 or go online at www.resinlab.com

PHYSICAL PROPERTIES

Viscosity (TM R050-12)

Viscosity (cps) Product

Least Viscous

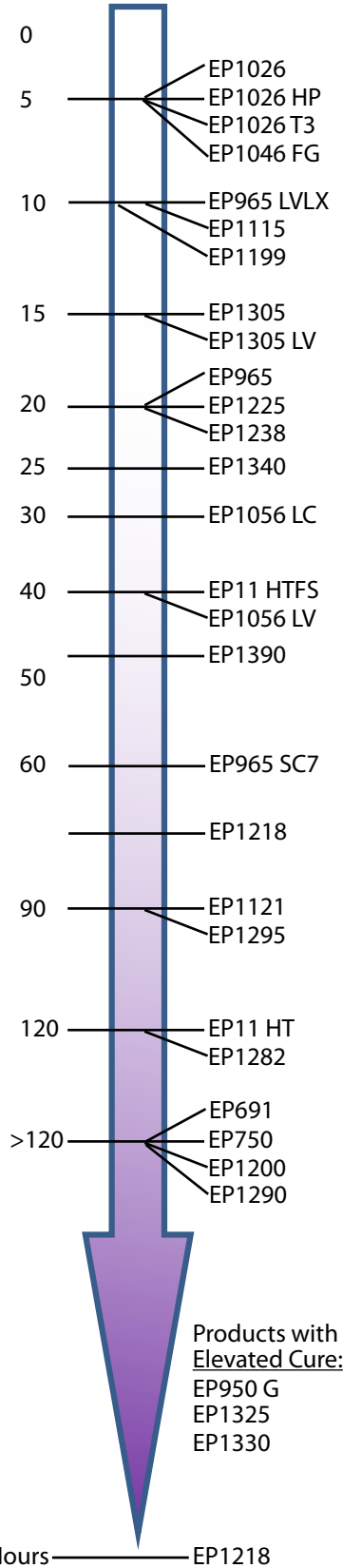


Most Viscous

Pot Life (TM R050-19)

Time (min) Product

Fastest



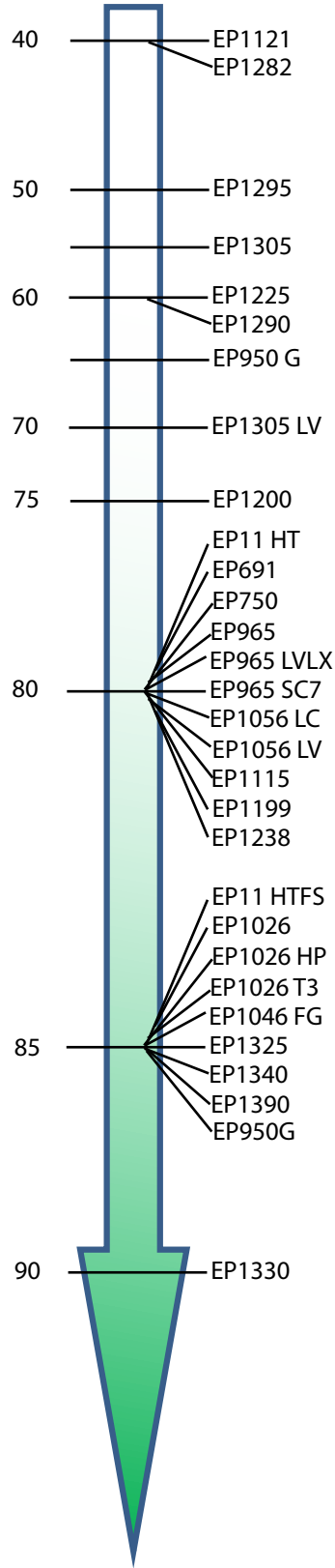
Slowest

Products with Elevated Cure:
EP950 G
EP1325
EP1330

Hardness (TM R050-17)

Hardness (Shore D) Product

Softest

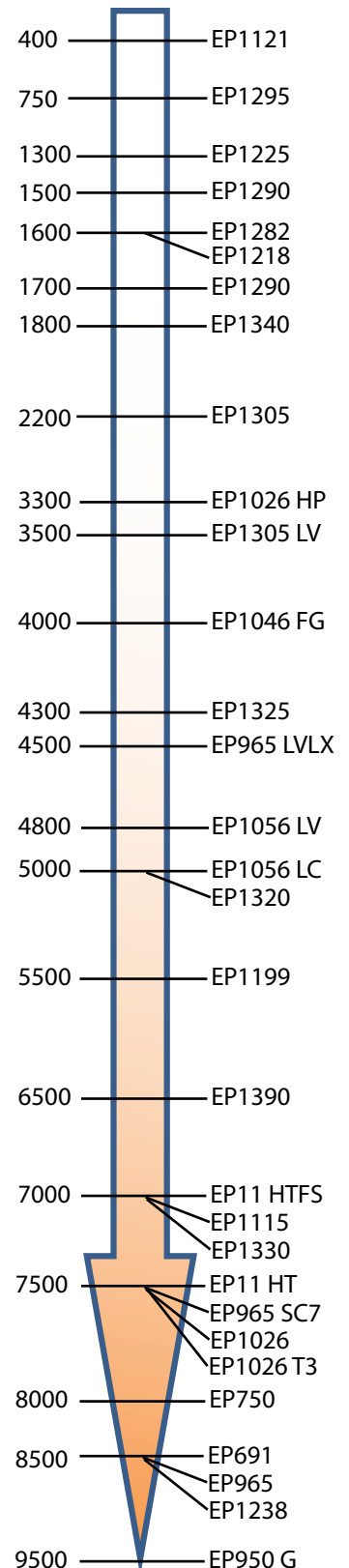


Hardest

Tensile Strength (TM R050-36)

Strength (psi) Product

Weakest



Strongest

Lab Capabilities

ResinLab's state of the art laboratory instrumentation has the capability to support our customer's needs. Used for both product development and quality control, these instruments allow us to validate design parameters and verify they stay in range with every production lot of material.

Our innovative laboratory facility enables us to provide solutions to industries including aerospace, defense, electronics and transportation. Whether you are in need of a high-tech or low-tech formulation - in a quart or a tote - we can provide it quickly and cost-effectively.



Services

Custom Formulations: While ResinLab offers an extensive line of standard encapsulants and adhesives, we specialize in creating custom formulations to meet your exact application requirements. Our staff of Product Development Chemists can respond to projects both large and small, using their decades of experience to quickly satisfy your design, manufacturing and quality requirements.

Product Modifications: ResinLab can modify color, viscosity, cure speed, hardness and nearly any other property to exactly meet your requirements. Our staff of Product Development Chemists have the expertise to get your project moving forward quickly and cost-effectively.

Toll Blending: With ResinLab's wide range of manufacturing capabilities and experience we are able to blend your in-house formulations. We provide the very best in formula review, effective manufacturing, certifications, MSDS documentation, QA specifications and custom packaging.

Custom Packaging: Working in conjunction with our sister company, KitPackers, ResinLab provides more custom packaging solutions than any other company, including the highest quality 2K and 1K packaging, such as cartridges, pouches, pre-mixed and frozen syringes.

We serve the global marketplace through Ellsworth Adhesives, the world's largest distributor of industrial adhesives. Whatever your packaging needs may be, look to ResinLab and KitPackers for precise, efficient and professional service.



Sample Requests

Contact us directly for samples at www.resinlab.com.

Expert Technical Assistance

For Technical Assistance on your unique application requirements, call **877-259-1669**.



AN ELLSWORTH ADHESIVES COMPANY

W186 N11687 Morse Drive
Germantown, WI 53022

Toll: 1-877-259-1669

Local: 1-262-502-6610

Fax: 1-262-502-4743

www.resinlab.com

Issued: RL 05/12

Because some factors that can affect the use and performance of our products are uniquely within your knowledge and control, it is essential that you evaluate the product to determine whether it is fit for your particular purpose and suitable for your method of application. You are solely responsible for the appropriate selection and use of our product in your specific application. ResinLab gathers information from you in order to respond to your questions about product use. However, ResinLab cannot know all of the factors and conditions associated with your intended use of products suggested by ResinLab. You must verify any advice, suggestions, recommendations or statements by ResinLab to you, including those related to product selection, use and/or application; and you must test the product in your particular application to insure its efficacy, performance and safety. RESINLAB IS NOT RESPONSIBLE FOR ANY PRODUCT FAILURE, PERSONAL INJURY OR PROPERTY DAMAGE (INCLUDING ANY INCIDENTAL, CONSEQUENTIAL, INDIRECT OR SPECIAL DAMAGES) THAT RELATE TO ADVICE, SUGGESTIONS, RECOMMENDATIONS OR STATEMENTS BY RESINLAB. Contact ResinLab at 1-877-259-1669 for details. Suggestions of use shall not be taken as inducements to infringe any patents.™ and ® designate trademarks of Resinlab or its affiliates.